
CREATING
PERFECT
HARMONY



flair

SINCE
1952

OVER **70** YEARS



CREATING
PERFECT
HARMONY



PRODUCT DESIGN AWARD WINNER

Flair are proud to have received the Good Design Award accolade in recognition of the ILI shower door collection.

The Good Design Award is a seal of global design excellence and a testimony to our passion for product quality and innovation.



Flair is Proudly Supported by
The European Regional Development Fund

THE ILI[®] COLLECTION

At Flair we understand that our customers have an ever demanding daily routine. Be it first thing in the morning or as you finish the day, a shower has the power to lift your spirits, calm the mind and invigorate.

The newly launched ILI collection is the result of Flair's focus on meaningful innovation that delivers what people really need in their bathroom. The range is incredibly functional and blends style with affordable practicality. Carefully considered design details make ILI a joy to use every day. The ergonomically crafted handles feature a cleverly integrated towel hook. The minimalist profiles and neatly curved hinges give simple, clean lines to the ILI door aesthetic. Each sliding door features a silent wheel track system while clearvue coating ensures the shower door glass remains sparkling clean. For complete flexibility, ILI is available in a variety of door styles, with some non-standard door widths and reduced height options also featuring in the range.

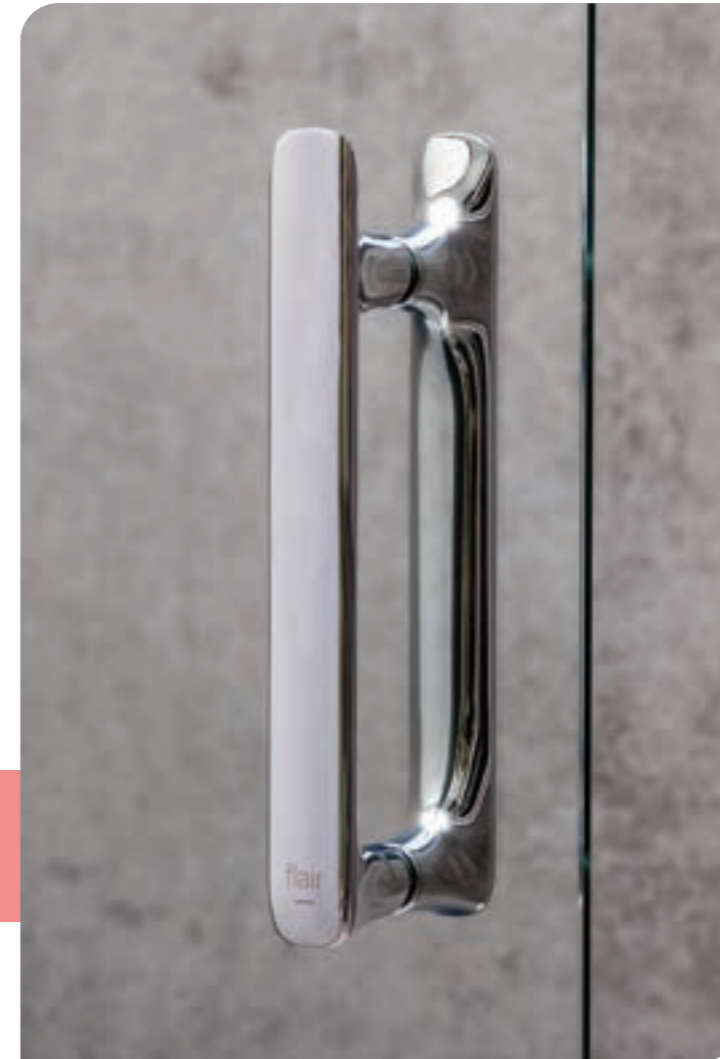
The stylish yet functional simplicity throughout the ILI range embodies **Design with Purpose**, a concept which lies at the heart of the ILI collection.

As you explore the ILI catalogue, we hope you are captivated by every detail.



VISIONARY INNOVATIONS

DOUBLE WHEEL
ROLLERS GLIDE
ALONG AN
INNOVATIVE
SILENT WHEEL
TRACK SYSTEM



UNIQUELY CRAFTED ILI HANDLE
WITH INTEGRATED ROBE HOOK



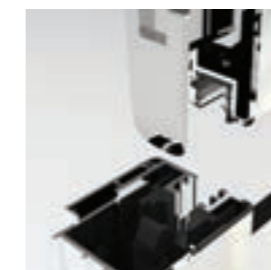
EXTERIOR HINGE VIEW



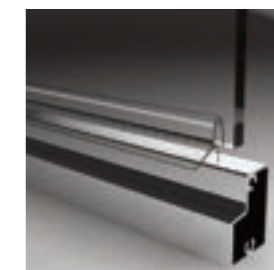
INTERIOR HINGE VIEW

SOFTLY CURVED
ILI HINGE DESIGN

TECHNICAL INNOVATIONS



PATENTED
CLICK FIT SYSTEM



ULTRA CLEAR
PVC BOTTOM SEAL



SILENT WHEEL
TRACK

FUNCTIONAL DETAILS

- 

1950mm
HEIGHT

1950MM HIGH SHOWER DOORS
- 

ULTRA CLEAR
PVC SEALS

VISUALLY ATTRACTIVE
ULTRA CLEAR PVC DOOR SEALS
- 

6mm
TOUGHENED
SAFETY
GLASS

6MM TOUGHENED
SAFETY GLASS THICKNESS,
CERTIFIED TO EN12150
- 


SEAMLESS
INTERIOR
COVER STRIPS

SEAMLESS INTERIOR
COVER STRIPS CONCEAL ALL
FIXATION POINTS INTERNALLY
- 

25mm
PROFILE
ADJUSTMENT

25MM ADJUSTMENT ON
EACH WALL PROFILE
- 

PRESS FIT
SEAL DESIGN

INNOVATIVE PRESS FIT SEAL DESIGN
FOR EASE OF INSTALLATION
- 

CHROME PLATED
HANDLE

PRECISELY CRAFTED SOLID CHROME
PLATED ILI HANDLES THAT FEATURE
AN INTEGRATED ROBE HOOK DESIGN
- 

PRE-ASSEMBLED
PROFILE FRAME

PRE ASSEMBLED DOOR FRAME
ON BIFOLD & HINGE DOOR -
FOR EASE OF INSTALLATION
- 

CLEARVUE
GLASS COATING

CLEARVUE IS A HYDROPHOBIC
GLASS COATING THAT RESISTS
THE BUILD UP OF LIMESCALE AND
GRIME ON THE GLASS SURFACE
- 

SUITABLE FOR
SIDE PANEL
INSTALLATION

SUITABLE FOR INSTALLATION
WITH SIDE PANELS
- 

SILENT WHEEL
ROLLER
MECHANISM

SILENT WHEEL
ROLLER MECHANISM
- 

CHROME
PLATED ABS
COVER CAPS

ULTRA SLIM COVER CAP
DESIGN FOR A SLEEK AND
MODERN DOOR AESTHETIC
- 

QUICK RELEASE
DOUBLE WHEEL
ROLLERS

SUPERIOR QUICK RELEASE
DOUBLE WHEEL ROLLERS WITH
STAINLESS STEEL BEARINGS
- 

LIFETIME
GUARANTEE

LIFETIME
GUARANTEE
- 

REVERSIBLE

ALL ILI DOOR STYLES ARE
FULLY REVERSIBLE FOR LEFT OR
RIGHT HAND INSTALLATION
- 

CLICK FIT
ASSEMBLY
SYSTEM
PATENTED

SUITABLE FOR
WETROOM AND
SHOWER TRAY
INSTALLATION



DESIGN WITH PURPOSE



MAGNETIC BIFOLD LINKAGE SYSTEM

The ILI Bifold door features an aesthetically pleasing functional magnetic system which ensure the smoothest of motion as the door functions. The beautifully curved hinge aligns with the design of ILI.

CONCEALED LONG DOOR STOP

A concealed long door stop system gives ILI sliding doors a controlled and gentle closing action. Double rollers with stainless steel ball bearings deliver an effortless sliding experience as the door glides along an innovative silent wheel track system.



PATENTED CLICK FIT ASSEMBLY SYSTEM

With our installers in mind, Flair have designed ILI with a patented "Click Fit" Assembly System.

This revolutionary assembly mechanism is screw free and ensures each door can be installed easily and securely.

The tapered dovetail joint locks securely into position, giving a seamless connection between the vertical and horizontal profiles. This pioneering installation system ensures maximum structural integrity within every door and makes ILI the shower door of choice for the busiest of bathrooms.

(European Patent No 3730017)



IDEA
CONCEPT
PROTOTYPE
ILI



ILI BIFOLD DOOR

THE ILI[®] COLLECTION

BIFOLD
DOOR

14

SLIDER
DOOR

16

HINGE
DOOR

18

ONE DOOR
SLIDING
QUADRANT &
OFFSET
QUADRANT

20

ONE DOOR
HINGED
QUADRANT &
OFFSET
QUADRANT

22

BABY ILI
COLLECTION
1800MM

24

BIFOLD DOOR

The space saving Ili Bifold door is perfect for use in smaller bathrooms or where space is restricted.

With flexibility in mind, the door opens inwards to create optimal access. The innovative magnetic bifold hinge creates seamless functionality as the door opens and closes. As is standard across the Ili collection, the bifold door comes with a reassuring lifetime guarantee for the ultimate peace of mind.

DOOR SIZE OPTIONS

PRODUCT DESCRIPTION	ADJUSTMENT SIZE		ACCESS	CODE
	MIN	MAX		
Bifold Door 760mm	710mm	760mm	472mm	ILIBF76SC
Bifold Door 800mm	750mm	800mm	512mm	ILIBF80SC
Bifold Door 850mm	800mm	850mm	521mm	ILIBF85SC
Bifold Door 900mm	850mm	900mm	571mm	ILIBF90SC
Bifold Door 1000mm	950mm	1000mm	671mm	ILIBF100SC

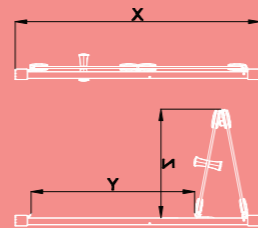
SIDE PANEL OPTIONS

PRODUCT DESCRIPTION	ADJUSTMENT SIZE		CODE
	MIN	MAX	
Side Panel 700mm	665mm	690mm	ILISP70SC
Side Panel 760mm	725mm	750mm	ILISP76SC
Side Panel 800mm	765mm	790mm	ILISP80SC
Side Panel 900mm	865mm	890mm	ILISP90SC
Side Panel 1000mm	965mm	990mm	ILISP100SC

COMPENSATING BAR

PRODUCT DESCRIPTION	COLOUR	CODE
Compensating Bar 25mm	Silver	ILICB25SC

BIFOLD - DOOR OPEN POSITION MEASUREMENTS



BIFOLD DOOR SIZE	X SIZE	Y SIZE	Z SIZE
760mm	710-760mm	472mm	313mm
800mm	750-800mm	512mm	333mm
850mm	800-850mm	521mm	354mm
900mm	850-900mm	571mm	379mm
1000mm	950-1000mm	671mm	431mm



BIFOLD DOOR ALCOVE INSTALLATION



MAGNETIC BIFOLD HINGE

BIFOLD DOOR WITH SIDE PANEL

SLIDER DOOR

The ILLI Sliding Door features a unique silent wheel track system that delivers a gently controlled opening and closing action. The 6mm toughened safety glass is framed with ultra slim profiles to give the door a clean, contemporary aesthetic.

With 8 different sizes to choose from, including an ingenious 1250mm option, the ILLI slider is ideal for a wide variety of applications.

DOOR SIZE OPTIONS

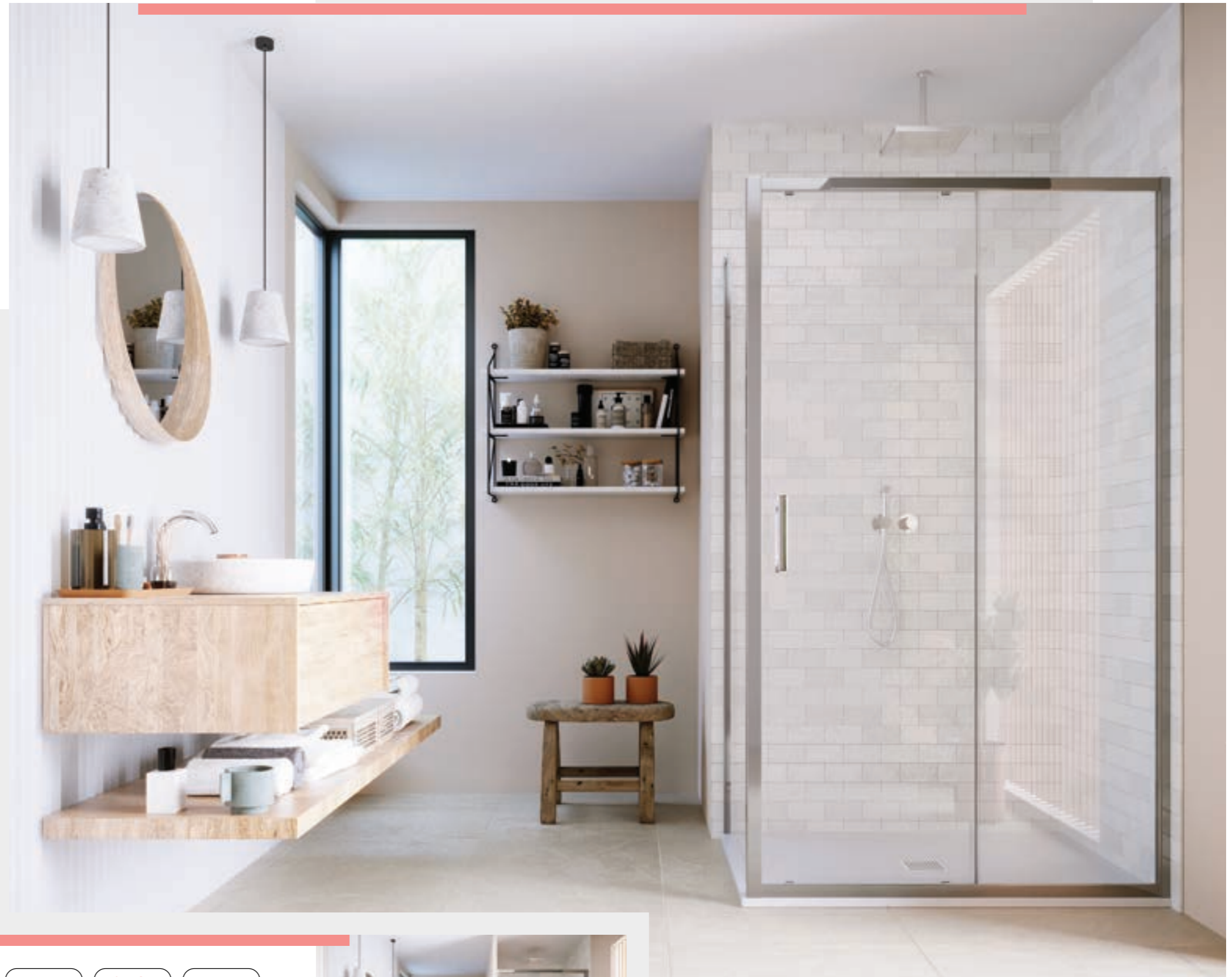
PRODUCT DESCRIPTION	ADJUSTMENT SIZE		ACCESS	CODE
	MIN	MAX		
Slider Door 1100mm	1050mm	1100mm	420mm	ILISA110SC
Slider Door 1200mm	1150mm	1200mm	470mm	ILISA120SC
Slider Door 1250mm	1200mm	1250mm	495mm	ILISA125SC
Slider Door 1300mm	1250mm	1300mm	520mm	ILISA130SC
Slider Door 1400mm	1350mm	1400mm	570mm	ILISA140SC
Slider Door 1500mm	1450mm	1500mm	570mm	ILISA150SC
Slider Door 1600mm	1550mm	1600mm	570mm	ILISA160SC
Slider Door 1700mm	1650mm	1700mm	570mm	ILISA170SC

SIDE PANEL OPTIONS

PRODUCT DESCRIPTION	ADJUSTMENT SIZE		CODE
	MIN	MAX	
Side Panel 700mm	665mm	690mm	ILISP70SC
Side Panel 760mm	725mm	750mm	ILISP76SC
Side Panel 800mm	765mm	790mm	ILISP80SC
Side Panel 900mm	865mm	890mm	ILISP90SC
Side Panel 1000mm	965mm	990mm	ILISP100SC

COMPENSATING BAR

PRODUCT DESCRIPTION	COLOUR	CODE
Compensating Bar 25mm	Silver	ILICB25SC





SLIDER DOOR
ALCOVE INSTALLATION

SLIDER DOOR
WITH SIDE PANEL



HINGE DOOR

The ILI hinge door is ideally suited where space is more limited in the bathroom. This outward opening hinge door has a firm magnetic close action. The ultra clear bottom door seal ensures optimal water retention.

The gently curved hinges are fully concealed on the inside, delivering visual perfection on both the exterior and interior of the shower.

DOOR SIZE OPTIONS

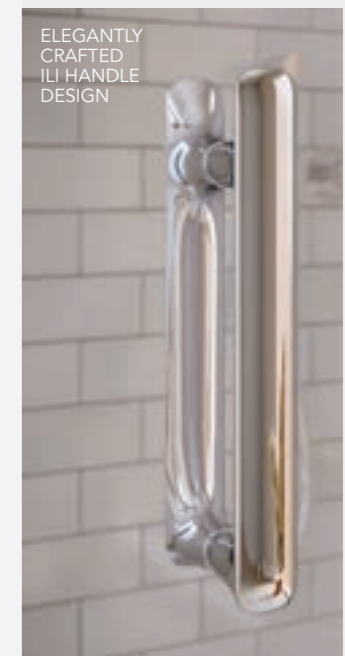
PRODUCT DESCRIPTION	ADJUSTMENT SIZE MIN	ADJUSTMENT SIZE MAX	ACCESS	CODE
Hinge Door 760mm	710mm	760mm	600mm	ILIHD76SC
Hinge Door 800mm	750mm	800mm	640mm	ILIHD80SC
Hinge Door 850mm	800mm	850mm	690mm	ILIHD85SC
Hinge Door 900mm	850mm	900mm	740mm	ILIHD90SC
Hinge Door 1000mm	950mm	1000mm	840mm	ILIHD100SC

SIDE PANEL OPTIONS

PRODUCT DESCRIPTION	ADJUSTMENT SIZE MIN	ADJUSTMENT SIZE MAX	CODE
Side Panel 700mm	665mm	690mm	ILISP70SC
Side Panel 760mm	725mm	750mm	ILISP76SC
Side Panel 800mm	765mm	790mm	ILISP80SC
Side Panel 900mm	865mm	890mm	ILISP90SC
Side Panel 1000mm	965mm	990mm	ILISP100SC

COMPENSATING BAR

PRODUCT DESCRIPTION	COLOUR	CODE
Compensating Bar 25mm	Silver	ILICB25SC



ELEGANTLY CRAFTED ILI HANDLE DESIGN



HINGE DOOR ALCOVE INSTALLATION



SOFTLY CURVED ILI HINGE DESIGN



HINGE DOOR WITH SIDE PANEL

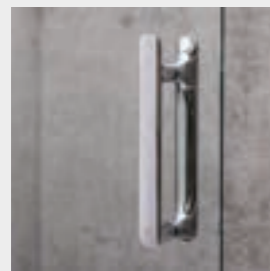
ONE DOOR SLIDING QUADRANT & OFFSET QUADRANT

The Ili One Door Quadrant and Offset Quadrant are perfectly shaped to make the most out of a corner showering space.

This door has an incredibly smooth opening and closing action thanks to the silent wheel roller mechanism. The stainless steel rollers also boast a quick release design for hassle free cleaning. Clearvue hydrophobic coating resists the build up of grime and limescale on the glass.

DOOR SIZE OPTIONS

PRODUCT DESCRIPTION	ADJUSTMENT SIZE		ACCESS	CODE
	MIN	MAX		
One Door Quadrant 900mm	870-895mm	870-895mm	485mm	ILICOQ90SC
One Door Offset Quadrant 800 x 1000mm	770-795mm	970-995mm	436mm	ILICOQ80X100SC
One Door Offset Quadrant 800 x 1200mm	770-795mm	1170-1195mm	436mm	ILICOQ80X120SC
One Door Offset Quadrant 900 x 1200mm	870-895mm	1170-1195mm	485mm	ILICOQ90X120SC



CRAFTED ILI HANDLE WITH INTEGRATED ROBE HOOK FEATURE



ONE DOOR SLIDING QUADRANT

- 1950mm HEIGHT
- 6mm TOUGHENED SAFETY GLASS
- 25mm PROFILE ADJUSTMENT
- CHROME PLATED HANDLE
- CLEARVUE GLASS COATING
- ANODISED ALUMINIUM PROFILES
- REVERSIBLE
- SILENT WHEEL ROLLER MECHANISM
- ULTRA CLEAR PVC SEALS
- CHROME PLATED ABS COVER CAPS
- SEAMLESS INTERIOR COVER STRIPS
- QUICK RELEASE DOUBLE WHEEL ROLLERS
- SUITABLE FOR SHOWER TRAY OR WETROOM INSTALLATION
- 25MM WALL PROFILE EXTENSION AVAILABLE
- LIFETIME GUARANTEE
- CLICK FIT ASSEMBLY SYSTEM PATENTED



ONE DOOR OFFSET SLIDING QUADRANT



HINGED QUADRANT & HINGED OFFSET QUADRANT

One of a kind, the Hinged Quadrant and Hinged Offset Quadrant is a unique option for corner shower spaces.

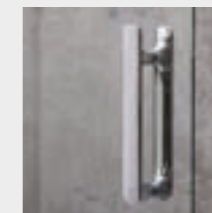
Vertical magnetic seals ensure water tightness and give the door a reassuring positive close action. All internal fixation points are concealed with cover strips ensuring the interior of this shower door is visually perfect. Cleaning is made easy with Clearvue hydrophobic coating on the 6mm toughened safety glass.

DOOR SIZE OPTIONS

PRODUCT DESCRIPTION	ADJUSTMENT SIZE MIN	ADJUSTMENT SIZE MAX	ACCESS	CODE
Hinge Quadrant 900mm	870-895mm	870-895mm	585mm	ILHQ90SC
Hinge Offset Quadrant 800 x 1200mm	770-795mm	1170-1195mm	585mm	ILHQ80X120SC
Hinge Offset Quadrant 900 x 1200mm	870-895mm	1170-1195mm	585mm	ILHQ90X120SC



EXTERIOR VIEW OF HINGE



CRAFTED ILI HANDLE WITH INTEGRATED ROBE HOOK FEATURE

HINGED OFFSET QUADRANT - OFFSET QUADRANT DOOR MUST HINGE FROM THE LONG SIDE



HINGED QUADRANT

- 1950mm HEIGHT
- 6mm TOUGHENED SAFETY GLASS
- 25mm PROFILE ADJUSTMENT
- CHROME PLATED HANDLE
- CLEARVUE GLASS COATING
- ANODISED ALUMINIUM PROFILES
- REVERSIBLE
- 25MM WALL PROFILE EXTENSION AVAILABLE
- ULTRA CLEAR PVC SEALS
- CHROME PLATED ABS COVER CAPS
- SEAMLESS INTERIOR COVER STRIPS
- SUITABLE FOR SHOWER TRAY OR WETROOM INSTALLATION
- LIFETIME GUARANTEE
- CLICK FIT ASSEMBLY SYSTEM PATENTED

BABY ILI

The Baby Ili collection is just 1800mm high, making it the ideal solution for loft conversions, low and sloping ceilings.



ONE DOOR OFFSET SLIDING QUADRANT

BIFOLD DOOR – SIZE OPTIONS

PRODUCT DESCRIPTION	ADJUSTMENT SIZE		ACCESS	CODE
	MIN	MAX		
Bifold Door 700mm	650mm	700mm	472mm	ILI180BF70SC
Bifold Door 800mm	750mm	800mm	512mm	ILI180BF80SC
Bifold Door 900mm	850mm	900mm	571mm	ILI180BF90SC
Bifold Door 1000mm	950mm	1000mm	671mm	ILI180BF100SC

ONE DOOR SLIDING QUADRANT – SIZE OPTIONS

PRODUCT DESCRIPTION	ADJUSTMENT SIZE		ACCESS	CODE
	MIN	MAX		
One Door Sliding Quadrant 800mm	770mm	795mm	436mm	ILI180COQ80SC
One Door Sliding Quadrant 900mm	870mm	895mm	485mm	ILI180COQ90SC

HINGE DOOR – SIZE OPTIONS

PRODUCT DESCRIPTION	ADJUSTMENT SIZE		ACCESS	CODE
	MIN	MAX		
Hinge Door 800mm	750mm	800mm	640mm	ILI180HD80SC
Hinge Door 900mm	850mm	900mm	740mm	ILI180HD90SC

SLIDING DOOR – SIZE OPTIONS

PRODUCT DESCRIPTION	ADJUSTMENT SIZE		ACCESS	CODE
	MIN	MAX		
Sliding Door 1200mm	1150mm	1200mm	470mm	ILI180SA120SC

SIDE PANEL – SIZE OPTIONS

PRODUCT DESCRIPTION	ADJUSTMENT SIZE		CODE
	MIN	MAX	
Side Panel 700mm	665mm	690mm	ILI180SP70SC
Side Panel 800mm	765mm	790mm	ILI180SP80SC
Side Panel 900mm	865mm	890mm	ILI180SP90SC
Side Panel 1000mm	965mm	990mm	ILI180SP100SC

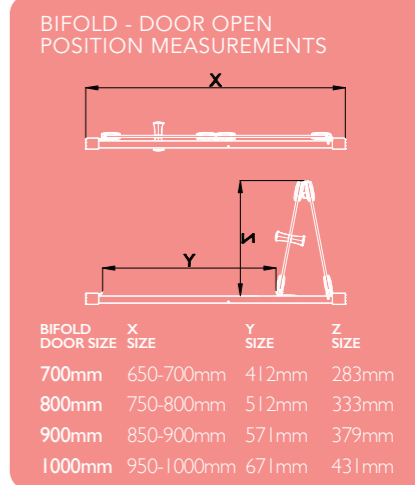


SLIDER DOOR WITH SIDE PANEL



HINGE DOOR WITH SIDE PANEL

- 1800mm HEIGHT
- 6mm TOUGHENED SAFETY GLASS
- 25mm PROFILE ADJUSTMENT
- CHROME PLATED HANDLE
- CLEARVUE GLASS COATING
- ULTRA CLEAR PVC SEALS
- CHROME PLATED ABS COVER CAPS
- SEAMLESS INTERIOR COVER STRIPS
- PRE-ASSEMBLED DOOR FRAME ON BIFOLD AND HINGE DOOR
- SUITABLE FOR SHOWER TRAY OR WETROOM INSTALLATION
- ANODISED ALUMINIUM PROFILES
- REVERSIBLE
- LIFETIME GUARANTEE



DESIGNED FOR LIFE



SINCE
1952

flair
—

OVER **70** YEARS

Founded in County Cavan in 1952, Flair have built up a trusted reputation as a specialist in the production of quality shower doors and bath screens. Our reputation has stood the test of time, making us the oldest manufacturer of our kind in Ireland. We are proud to be a brand of choice for customers.

With an unwavering commitment to customer care, Flair combine lifelong knowledge and expertise with advanced production techniques. We offer award winning designs that bring a new sense of enrichment to the bathroom and enjoyment to our customers.

The perfect blend of function and form. Designed for life.



**AWARD WINNING
PRODUCT DESIGN**

QUALITY GUARANTEED

At Flair we have an unwavering commitment to product quality

All ILLI Shower Doors are CE approved and quality tested to EN 14428:2015+A1:2018 - Shower enclosures - Functional requirements and test methods BS EN 14428:2015+A1:2018 - Shower enclosures - Functional requirements and test methods.

ILLI Shower Enclosures have been subject to lifetime shower door cycle testing consisting of 40,000 functional cycles, water tests, impact tests and corrosion tests for all components.

ILLI Doors are rigorously tested to ensure that they meet the highest possible industry standards. Transportation testing is also conducted so that the ILLI product arrives to our customer in the best possible condition.

INSTALLATION

Full installation instructions are provided with each ILLI product to ensure correct installation. ILLI Shower Doors and Side Panels are adjustable between the dimensions stated. All dimensions are approximate.

ILLI Lifetime Guarantee

ILLI Shower Doors are covered by a lifetime guarantee against manufacturer defect. This guarantee is valid on the condition that goods are installed and maintained in accordance with the products fitting instructions and best practices. ***Note: Non glass and detachable parts such as rollers, seals, door dampeners and cover caps are subject to normal wear and tear during usage and are under statutory guarantee for 2 years from time of purchase.**

We ask our customers to register their guarantee online at www.flairshowers.com or return the guarantee card that comes with every ILLI door.

Aftersales & Spare Parts service

Flair is 100% committed to customer service excellence. We carry a full range of spare parts for each of our product ranges and have dedicated aftersales representatives to deal with any issues you may have.

If you would like to talk to our customer aftercare team, please contact us on +353 42 966 8000.

CONDITIONS OF SALE

Unless otherwise stated, all price quotations are subject to acceptance within 30 days of date of issue. Other than in the case of faulty goods / incorrect despatch, Flair will not accept the return of any product.

AS PART OF OUR CONTINUING POLICY OF PRODUCT IMPROVEMENT, WE RESERVE THE RIGHT TO AMEND SPECIFICATIONS, COLOURS AND PRICES WITHOUT PRIOR NOTICE.

*Errors and Omissions Exempt.



SLIDER DOOR WITH SIDE PANEL





BIFOLD DOOR
WITH SIDE PANEL

FEBRUARY 2023

DESIGNED FOR LIFE

Flair Showers Ltd.
Rocks Road
Kingscourt
Co Cavan
Ireland

T +353 42 966 8000
E sales@flairshowers.com

OVER **70** YEARS



Connect with us



FLAIRSHOWERS.COM